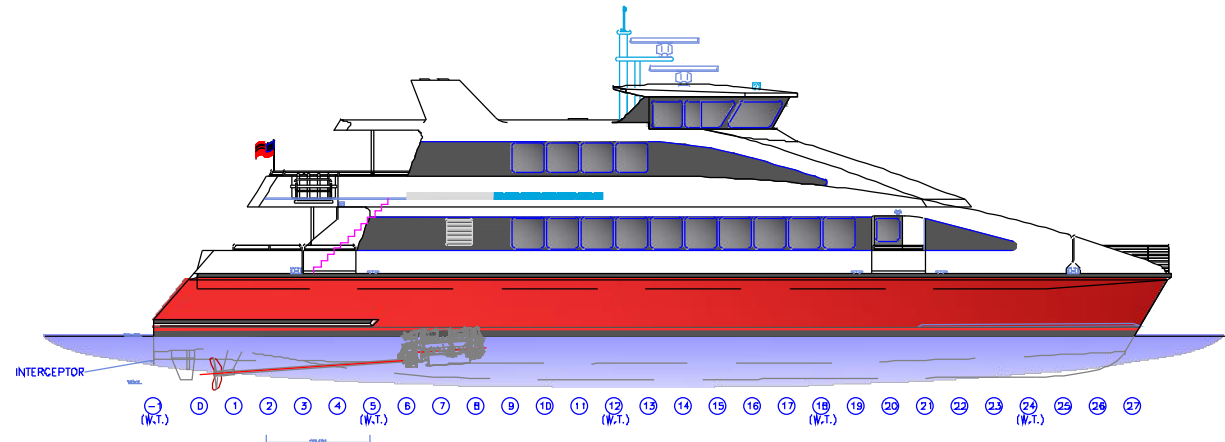


118' WTA CATAMARAN FERRY S154 4101-02 FIXED FIRE SYSTEM A & D



SH T#	DESCRIPTION	REV
1	COVER SHEET	-
2	MATERIAL LIST, FRAME 3 DETAILS	-
3	PLAN VIEW, ELEVATION VIEW	-
4	FRAME 5 AND FRAME 8	-

REVISIONS			
ZONE	SYM	DESCRIPTION	DATE

GENERAL NOTES

RESERVATIONS	
No.	DESCRIPTION

REFERENCES		
No.	DWG No.	TITLE
1.	GS-1007-1 ALEXANDER GOW	WTA ENGINE ROOMS -SBS FM-200 FIRE SUPPRESSION SYSTEM

NICHOLS

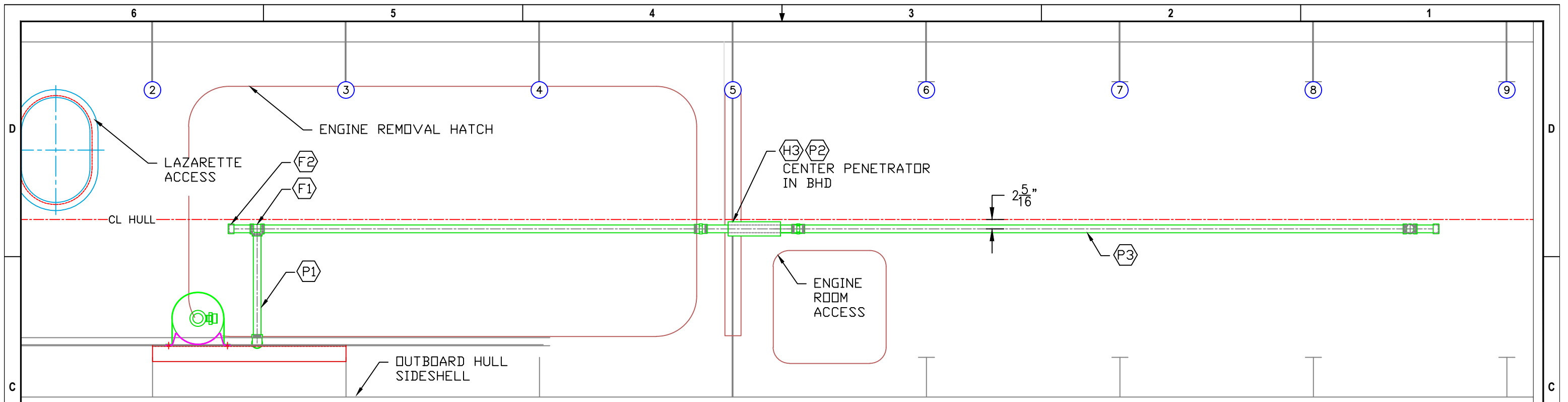
BROS. BOAT BUILDERS

5400 So. Cameron Rd.
Freeland, WA 98249
Whidbey Island
Office (360)331-5500
FAX(360)331-7435

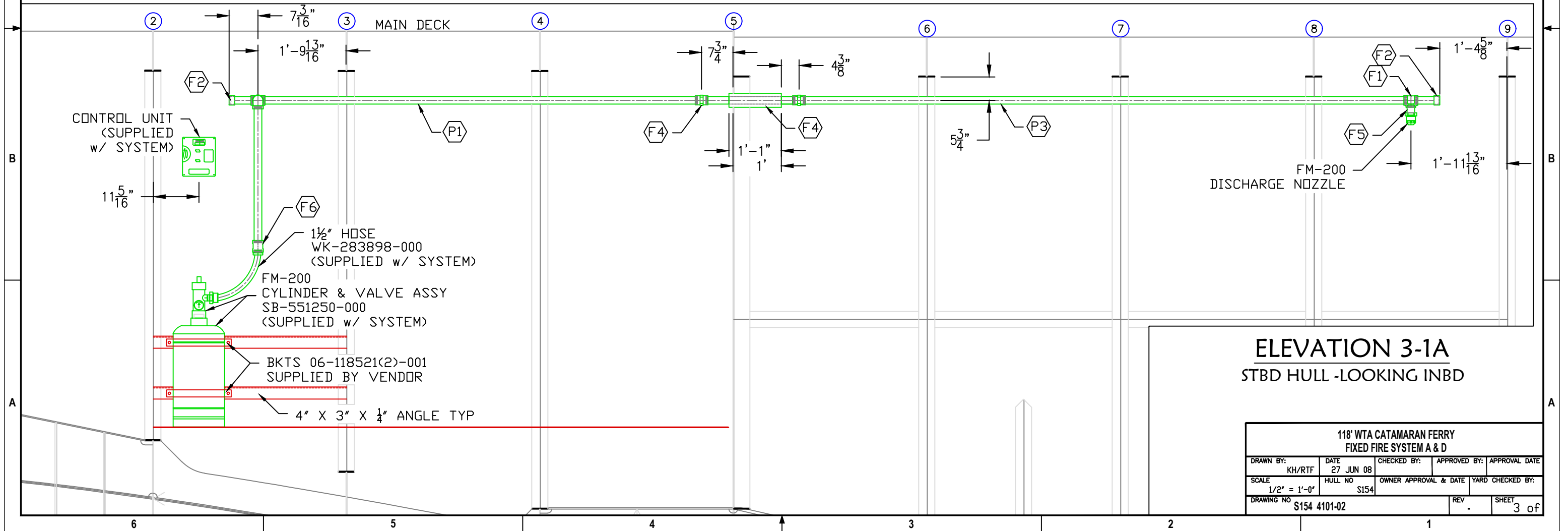
THIS DRAWING AND THE INFORMATION CONTAINED HEREON, IS SUPPLIED WITH THE UNDERSTANDING THAT IT IS THE EXCLUSIVE PROPERTY OF: NICHOLS BROTHERS BOAT BUILDERS INC. AND MUST NOT BE USED OR REPRODUCED WITHOUT PERMISSION TO DO SO IN WRITING.

118' WTA CATAMARAN FERRY
FIXED FIRE SYSTEM A & D

DRAWN BY:	KH/RTF	DATE	27 JUN 08	CHECKED BY:	APPROVED BY:	APPROVAL DATE:	KKT	08/25/08
SCALE	AS NOTED	HULL NO	S154	OWNER APPROVAL & DATE	YARD CHECKED BY:			
DRAWING NO	S154 4101-02			SWBS	REV	SHEET 1 of 4		

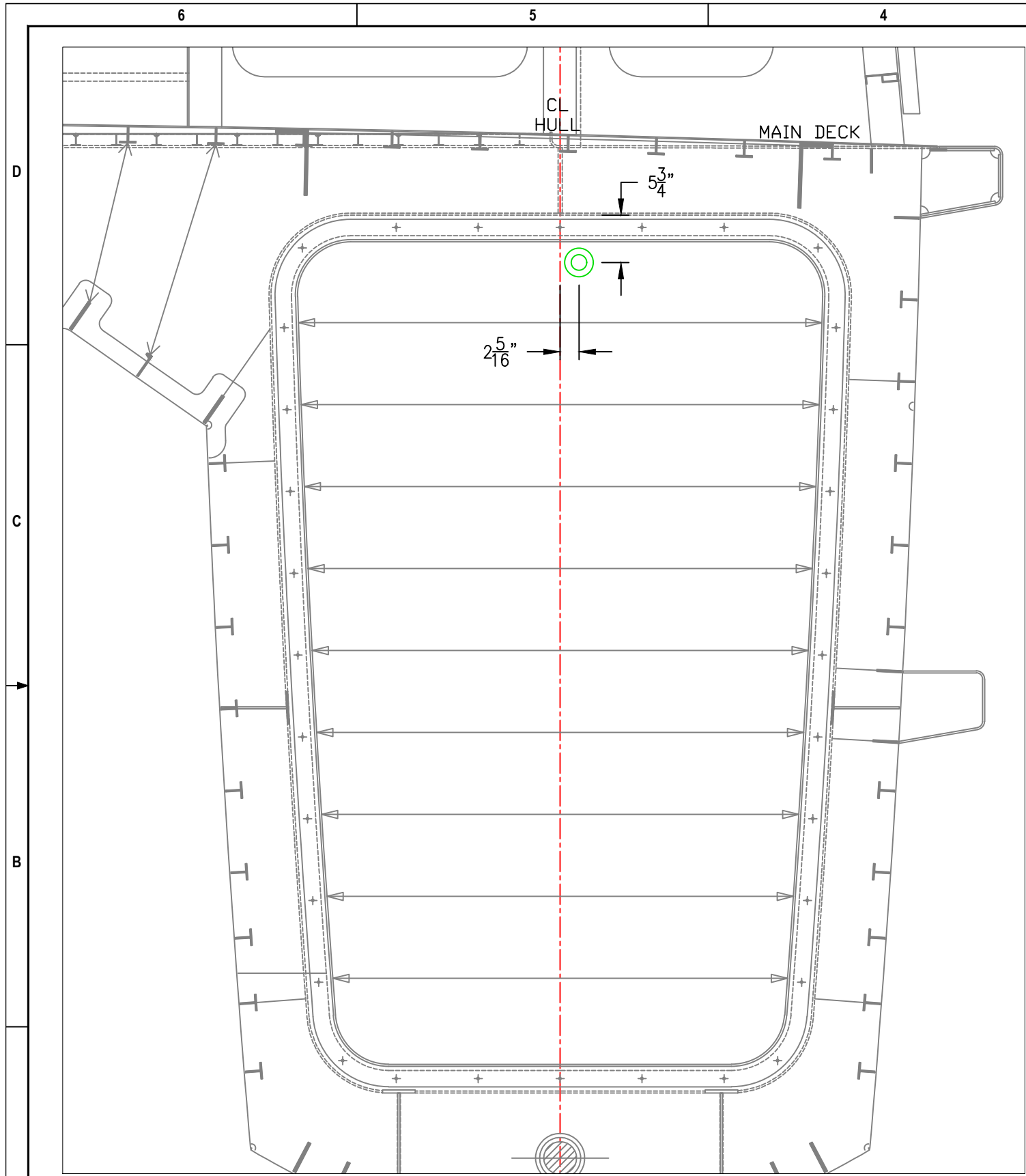


PLAN 3-4C
LAZARETTE & ENGINE ROOM
FM200 LAYOUT



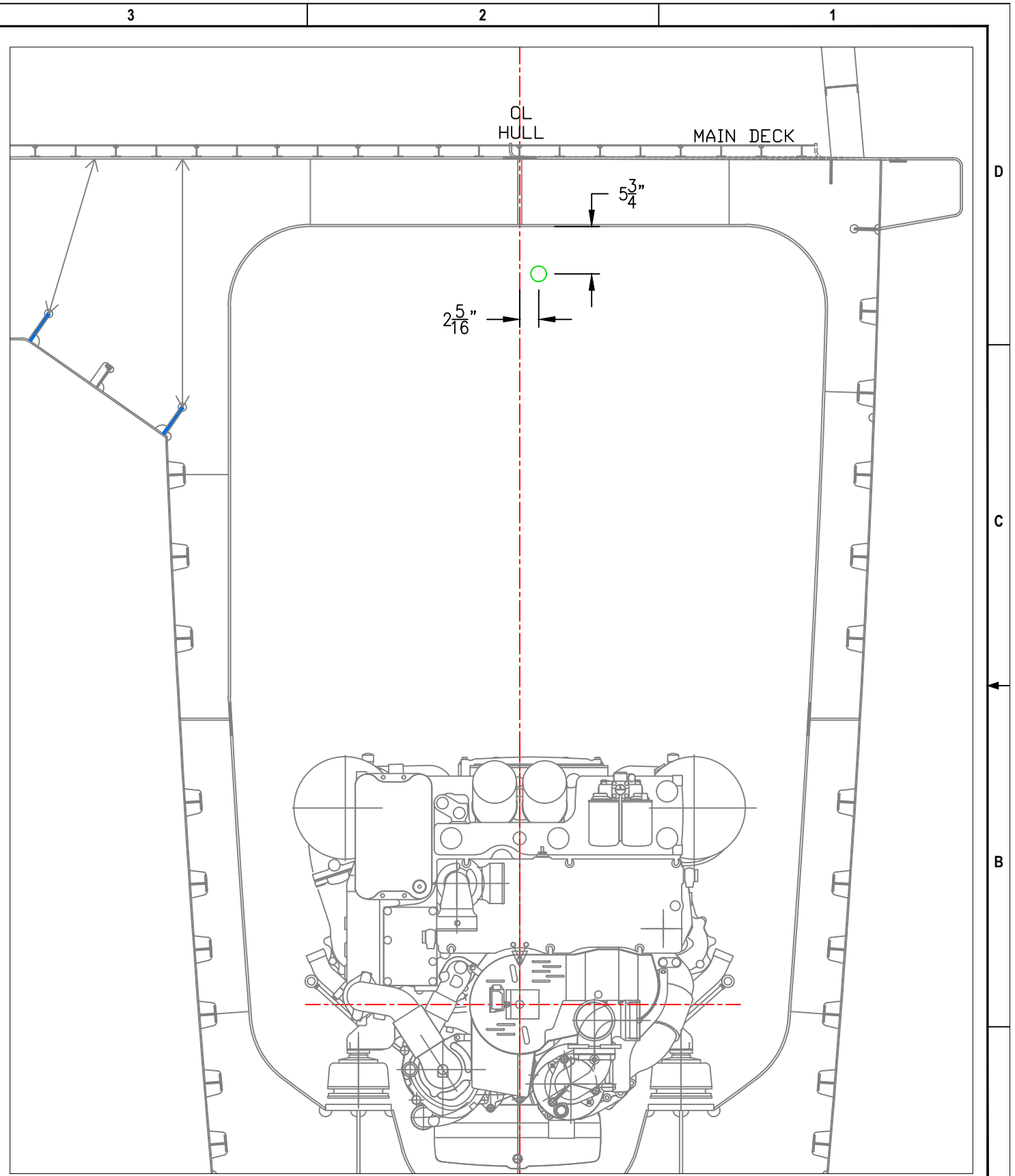
ELEVATION 3-1A
STBD HULL -LOOKING INBD

118' WTA CATAMARAN FERRY FIXED FIRE SYSTEM A & D				
DRAWN BY: KH/RTF	DATE 27 JUN 08	CHECKED BY:	APPROVED BY:	APPROVAL DATE
SCALE 1/2" = 1'-0"	HULL NO S154	OWNER APPROVAL & DATE	YARD CHECKED BY:	
DRAWING NO S154 4101-02	REV		SHEET	3 of



SECTION 4-6A

LOOKING FWD TO BHD 5
STBD SIDE SHOWN - PORT SIDE OPP HAND



SECTION 4-2A

LOOKING FWD TO FRAME 9
STBD SIDE SHOWN - PORT SIDE OPP HAND

118' WTA CATAMARAN FERRY FIXED FIRE SYSTEM A & D				
DRAWN BY:	DATE	CHECKED BY:	APPROVED BY:	APPROVAL DATE
KH/RTF	27 JUN 08			
SCALE	HULL NO	OWNER APPROVAL & DATE	YARD CHECKED BY:	
1/2" = 1'-0"	S154			
DRAWING NO	REV	SHEET		
S154 4101-02	.	4 of		